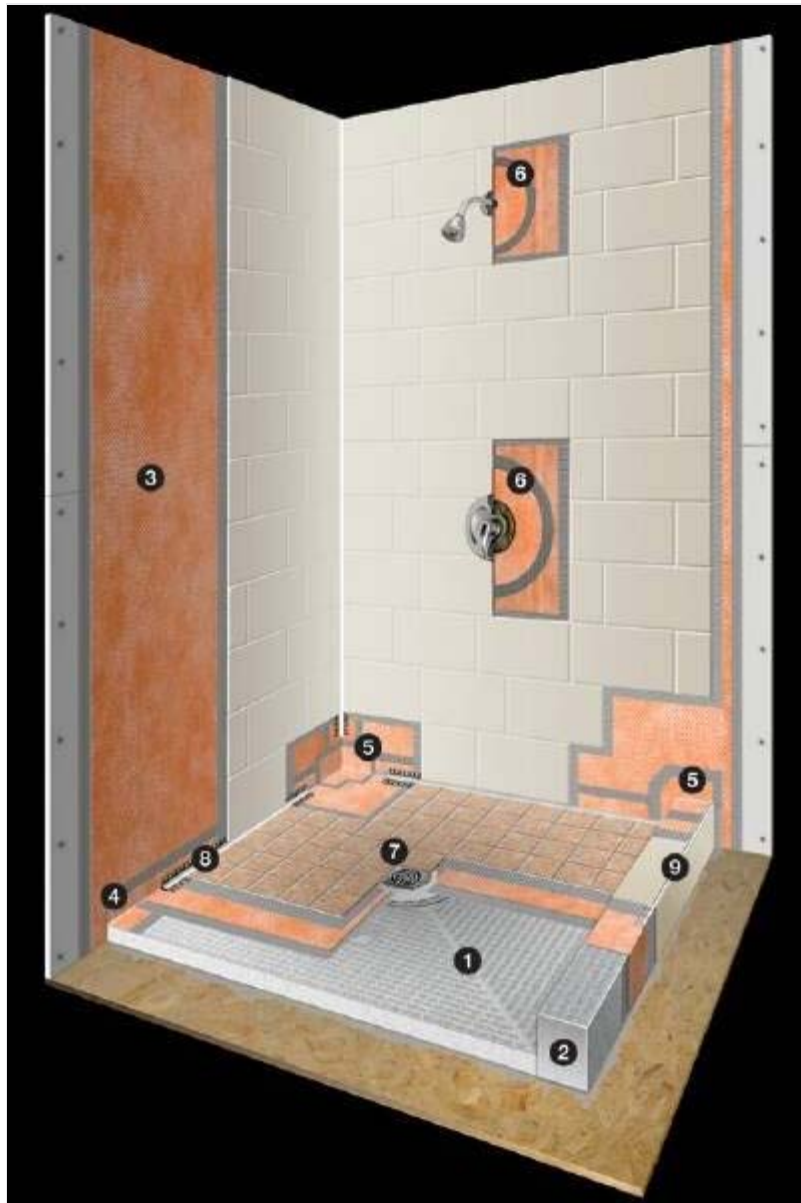


## Tile Shower - System Components



### Reduce installation time and weight

Schluter prefabricated shower substrates provide an alternative to shower bases constructed of mortar. The shower tray, curb, and ramp are especially useful in large-scale, repetitive jobs, such as hotels, apartments, and condominiums for the significant time savings that can be realized. Benefits are also realized for residential application, by eliminating the skills required to slope a mortar bed; as well as reducing weight.

Schluter-KERDI-SHOWER-ST tray is a sloped shower tray made of lightweight, expanded polystyrene for constructing mortar-free shower receptors. It eliminates the need to build a mortar bed. It is specifically designed to integrate with the Schluter-KERDI-SHOWER-SC curb and KERDI-DRAIN. The KERDI-SHOWER-ST tray is available in 4 sizes, and can be cut to size.

 [Read more](#)



Schluter-KERDI-SHOWER-SC curb is a prefabricated shower curb made of lightweight, expanded polystyrene.

 [Read more](#)



Schluter-KERDI-SHOWER-SR is a lightweight, expanded polystyrene shower ramp.

 [Read more](#)



## Protect against water and vapor penetration

Since shower pan liners are placed below the mortar setting bed in a conventional assembly, moisture is allowed to saturate the mortar bed. This can increase the risk of leakage, cause efflorescence, and foster bacteria and fungus growth. Bonded waterproof membranes, such as Schluter-KERDI on the other hand, bond directly to the mortar bed and protect it from becoming saturated. In addition, KERDI protects wall cavities from vapor penetration.



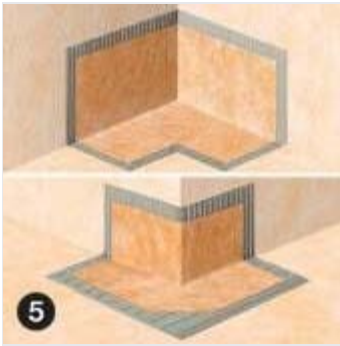
Schluter-KERDI is a pliable sheet-applied polyethylene waterproofing membrane and vapor retarder that guarantees uniform thickness. It is covered on both sides with a fleece webbing to anchor the membrane in the thin-set mortar.

 [Read more](#)



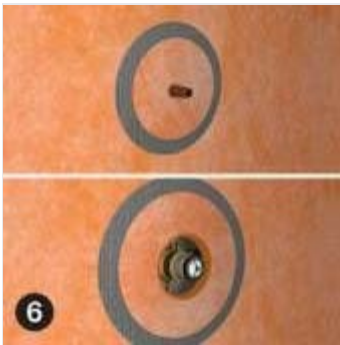
Schluter-KERDI-BAND is a polyethylene waterproofing strip, which is used to seal KERDI seams and floor/wall transitions.

 [Read more](#)



Schluter-KERDI-KERECK are preformed inside and outside corners of Schluter-KERDI.

 [Read more](#)



Schluter-KERDI-SEAL-PS and -MV prefabricated seals are sections of the Schluter-KERDI waterproofing membrane with overmolded rubber gaskets that are used to seal pipe protrusions through the KERDI waterproofing membrane and protect moisture-sensitive solid backing panels at the mixing valve.

## Provide a secure connection to the bonded waterproofing membrane at the top of the assembly rather than below it

The foundation of the system is the Schluter-KERDI-DRAIN, which was designed specifically to ensure a simple and secure connection to bonded waterproof membranes, such as the Schluter-KERDI waterproofing membrane, at the top of the assembly rather than below it, thereby reducing the risk of leakage, efflorescence, and fungus and bacteria growth. For shower floors constructed with mortar, KERDI-DRAIN eliminates the process of pre-sloping the floor. When used in conjunction with KERDI-SHOWER-ST prefabricated tray and KERDI-SHOWER-SC prefabricated curb, the mortar setting bed is eliminated altogether.

Schluter-KERDI-DRAIN is a floor drain with an integrated bonding flange for connecting to Schluter-KERDI, as well as other bonded waterproof membranes. The bonding flange has a large contact area to allow a secure connection between the bonded waterproof membrane and the top of the drain assembly. Features a fully adjustable square grate and accommodates a wide range of tile thicknesses.

 [Read more](#)



## Provide beautiful, hygienic, maintenance-free movement joints and floor/wall transitions

Ceramic cove base represents a neat, hygienic method for treating transitions by providing a curved surface that prevents the collection of dirt and is easy to clean. However, the limited availability of ceramic trim pieces has resulted in the use of sealant and caulk to treat such transitions. These joints must be continually maintained throughout the life of the installation.



Schluter-DILEX cove-shaped profiles (-EHK, -HKW, and -AHK) provide beautiful, maintenance-free floor/wall transitions and inside corners. These profiles eliminate the need for caulk joints, which must be replaced over time. The cove-shaped profiles allow for easy cleaning and will not trap debris, making them ideal for areas where strict hygiene is essential. Available in a wide variety of metal finishes and colored PVC.

 [Read more](#)



Schluter-DILEX-EKE is an alternative to the cove-shaped profile. EKE provides a straight, uniform, discreet joint that eliminates caulking at floor/wall transitions and inside corners. Available in a variety of colors to match the grout.

 [Read more](#)

## Protect and finish tile edges

Ceramic and stone tiles are durable, and easy to maintain. However, lack of trim pieces such as bullnose or quarter round in many tile lines limit designers' options. Schluter-Systems offers various finishing and edge-protection profiles for outside wall corners, tile bases, and other tiled edges to create a beautiful, durable installation.

Schluter-JOLLY, -RONDEC, and -QUADEC are finishing and edging profiles that are used for outside corners and other tiled edges. Schluter-JOLLY provides a



straight edge finish, RONDEC a rounded edge, and QUADEC a symmetrically square edge. Matching inside and outside corners (90°) are available for RONDEC and QUADEC.

 [Read more](#)